



Aquarous

JOMTIEN PATTAYA



THE IMPRESSION OF BLUE

Inspired by the serene ocean, “The Impression of Blue” immerses you in nature’s beauty. Just like the layers of the ocean, this design offers a unique atmosphere that enriches your daily life.



VIEWS TO IMPRESS

Designed to capitalise on the expansive views of the sea, the facilities offer a place to workout, unwind, relax and enjoy while taking full advantage of the ocean views.





THE PALOUR

PROJECT INFORMATION

TOTAL LAND AREA	5-3-76.10 Rais*
PROJECT TYPE	High-Rise Condominium 2 Buildings 44 & 47 Storeys
TOTAL UNIT	Residential 606 Units Commercial Shops 5 Units

UNIT TYPES

1 Bedroom Superior	34.70 - 37.65	sq.m.	2 Bedrooms Executive Suite	115.50 - 127.25	sq.m.
1 Bedroom Deluxe	43.80 - 61.30	sq.m.	2 Bedrooms Grand Executive Suite	141.30	sq.m.
1 Bedroom Deluxe Suite	47.70 - 76.40	sq.m.	3 Bedrooms Premier	130.10 - 145.10	sq.m.
2 Bedrooms Executive	79.75 - 97.30	sq.m.	3 Bedrooms Premier Suite	173.80	sq.m.
2 Bedrooms Grand Executive	99.70 - 114.80	sq.m.	Penthouse	315.90	sq.m.



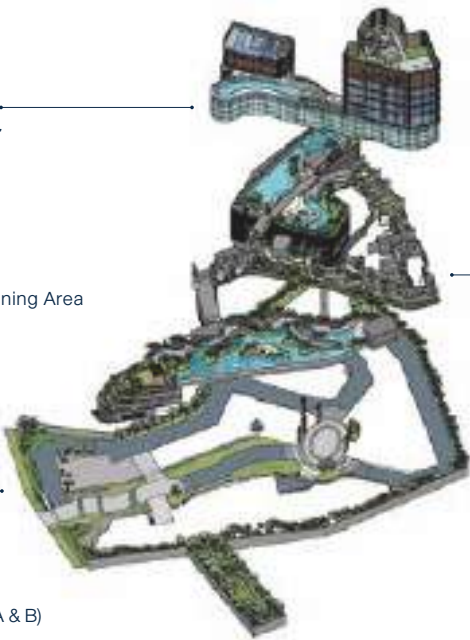
FACILITY HIGHLIGHTS

CLOUD CLUB
43rd - 44th Floor

- Sky Pool
- Sky Lounge
- Sky Fitness
- Yoga
- Boxing & Circuit Training Area
- Bike Simulator

GROUND
Floor

- Commercial Shop
- Aromatic Garden
- The Palour (Building A & B)
- Tea Lounge
- Residence Lounge
- Library Lounge



AQUA CLUB
3rd Floor

AQUA PARK

- Lazy Pool
- Fun Pool
- Beach Pool

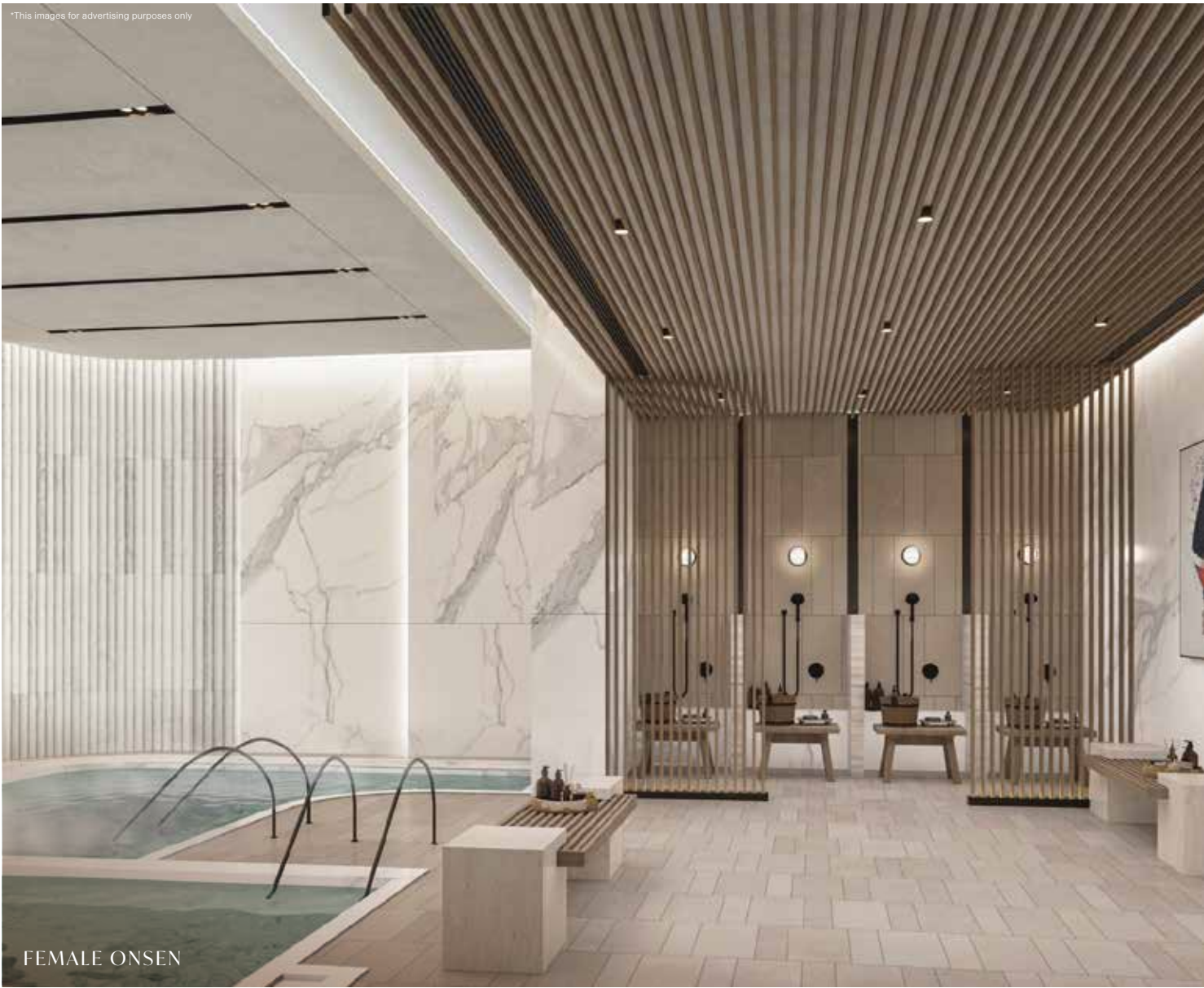
FUN CLUB

- Kids Club
- Playground
- Family Lounge
- Game Arcade
- Collaborative Workspace

WELLNESS

- Onsen | Steam | Sauna
(Male & Female)

*This images for advertising purposes only

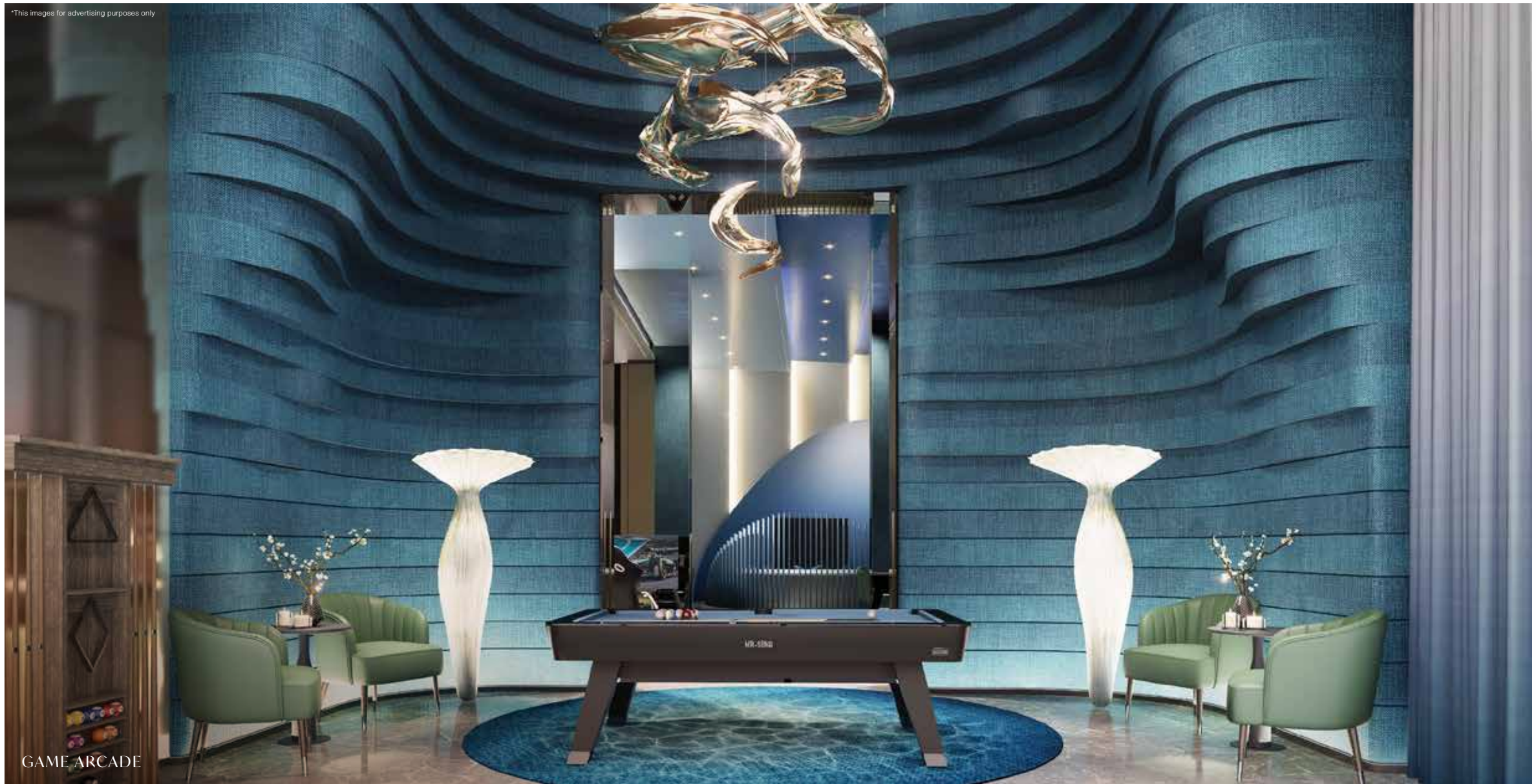


FEMALE ONSEN

*This images for advertising purposes only



MALE ONSEN



AQUA CLUB

The facility floor, connected by sky bridge to all buildings, is an area that feels like living in a vast underwater world. It features a variety of wet spaces for both indoor and outdoor enjoyment. An Aqua Park, Games Arcade and Wellness Area ensure that the needs of all family members, from the very young to the more mature, are looked after and embraced.

AQUA PARK

Whether for exercise or relaxation Aqua Park's flexible design caters for all members with a range of swimming pool environments that allow everyone to share in this ultimate form of relaxation and refreshment. From a child learning to swim to adults who want to rest at the end of a long work day, every pool has been created to support and rejuvenate and serve all generation's needs. A perfect spot to support our member's diverse lifestyles and allow for quality family time.



SKY LOUNGE

CLOUD CLUB

A touch of luxury through a refined and stylish design, the club offers spectacular views over the night lights creating a unique and intimate atmosphere that is ideal for private gatherings.







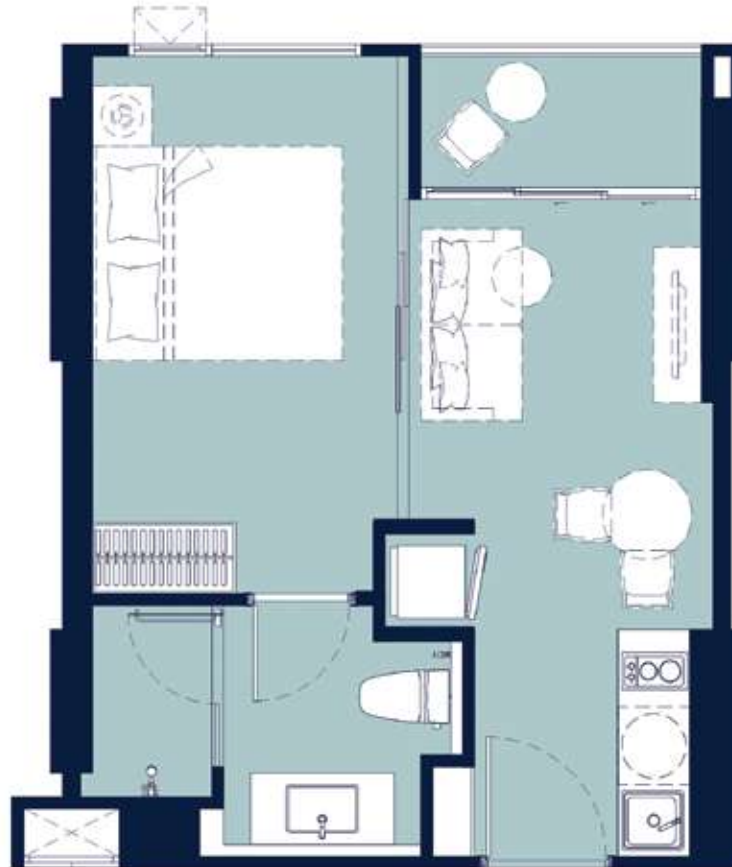


43rd FLOOR MASTER PLAN
SCALE 1:200



44th FLOOR MASTER PLAN
SCALE 1:200

Layout and area of units may change as deemed appropriate without prior notice but will not effect the use and dwelling.



1 BEDROOM SUPERIOR | 34.70 - 37.65 SQ.M.

Layout and area of units may change as deemed appropriate without prior notice but will not effect the use and dwelling.



1 BEDROOM DELUXE SUITE | 47.70 - 76.40 SQ.M.

Layout and area of units may change as deemed appropriate without prior notice but will not effect the use and dwelling.



2 BEDROOMS EXECUTIVE | 79.75 - 97.30 SQ.M.

Layout and area of units may change as deemed appropriate without prior notice but will not effect the use and dwelling.



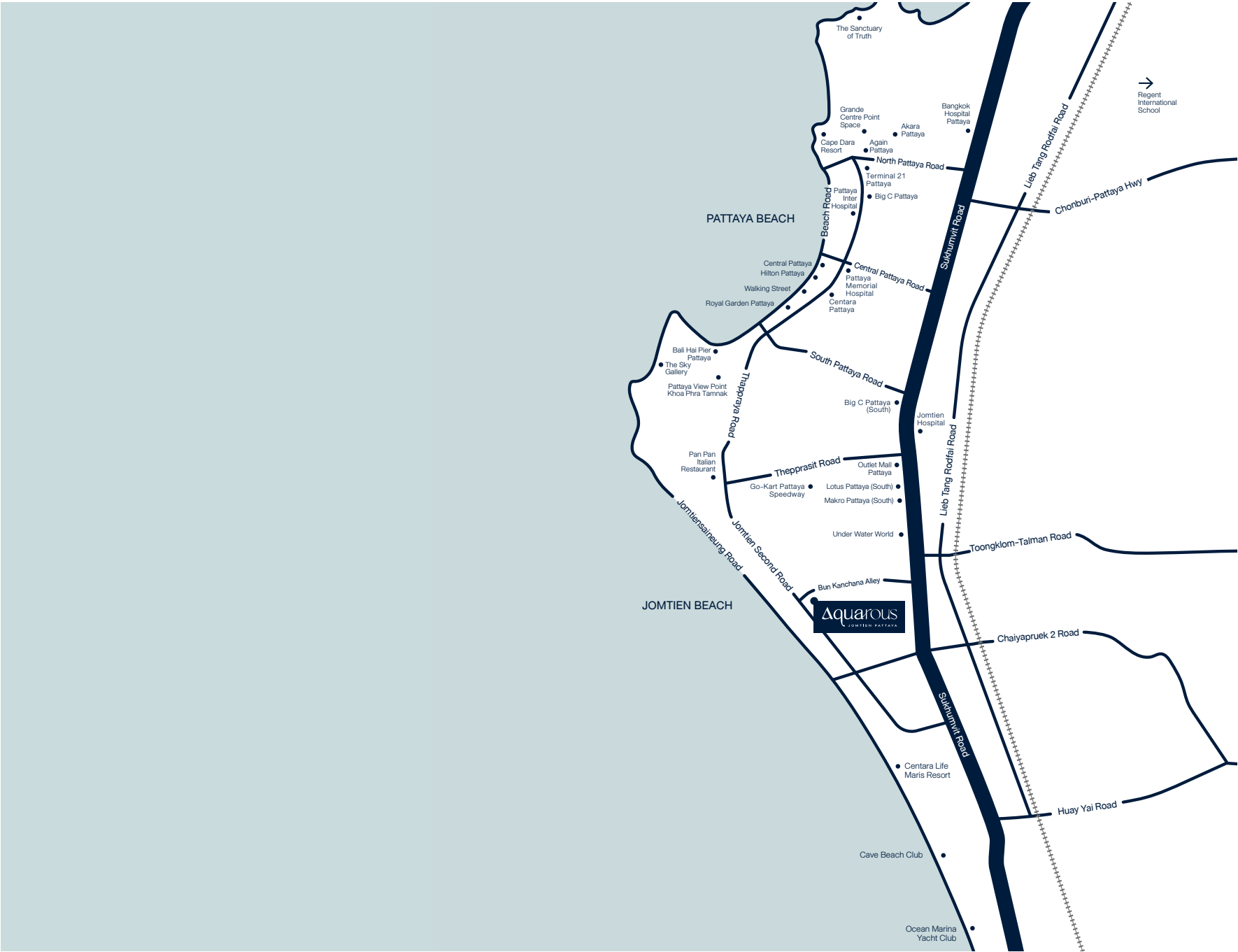
3 BEDROOMS PREMIER SUITE | 173.80 SQ.M.

Layout and area of units may change as deemed appropriate without prior notice but will not effect the use and dwelling.



PENTHOUSE | 315.90 SQ.M.

Layout and area of units may change as deemed appropriate without prior notice but will not effect the use and dwelling.



Wise Estate 20 Co.,Ltd. Registration 0105566136442 Address No. 9 Ram Intra 5 Alley, Lane 23, Anusawari, Bang Khen, Bangkok 10220 Registered capital of A Million baht. Mr. Kromchet Vipapong Chief Executive Officer Project Owner of Aquarous Jomtien Pattaya Condominium High-Rise 2 Buildings 44th-47th Floors Address : Bun Kanjana, Nong Prue, Bang Lamung, Chonburi 20150, Thailand. Recording to the title deed no. 61671 and no. 89801 Land Area 5-3-76.10 Rais (For residential 606 units & for Commercial Shops 5 units) The land and buildings are free of any financial encumbrances with any institutions. Currently, the project is in the process of obtaining EIA approval to commence construction on November 2024. The expected completion date is approximately November 2027.